

DATA SHEET

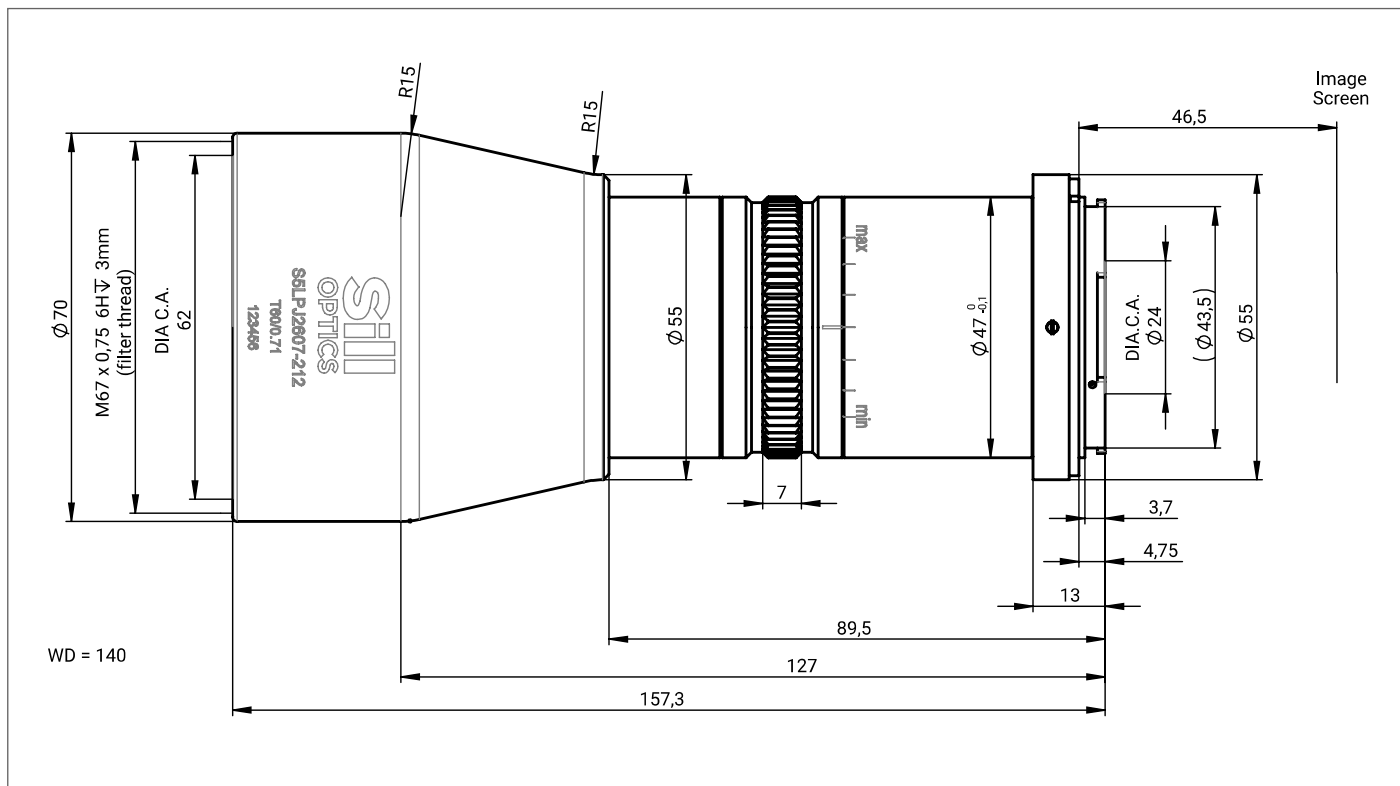
S5LPJ2607-FMO TELEC. IMAGING LENS T60/O.7

- ▶ STANDARD TELECENTRIC LENSES
- ▶ OBJECT-SIDED TELECENTRIC
- ▶ WITH F-MOUNT
- ▶ VARIABLE IRIS (MANUAL)



ILLUSTRATION ONLY - THE COLOR OF THE LENSES CAN DIFFER

OUTLINE DRAWING



All information contained in this data sheet is for information purposes only and is not binding. The content is subject to change at any time without notification, all information without guarantee. We reserve the right to make constructional changes in the course of product improvement. Copyright © Sill Optics GmbH • All rights reserved

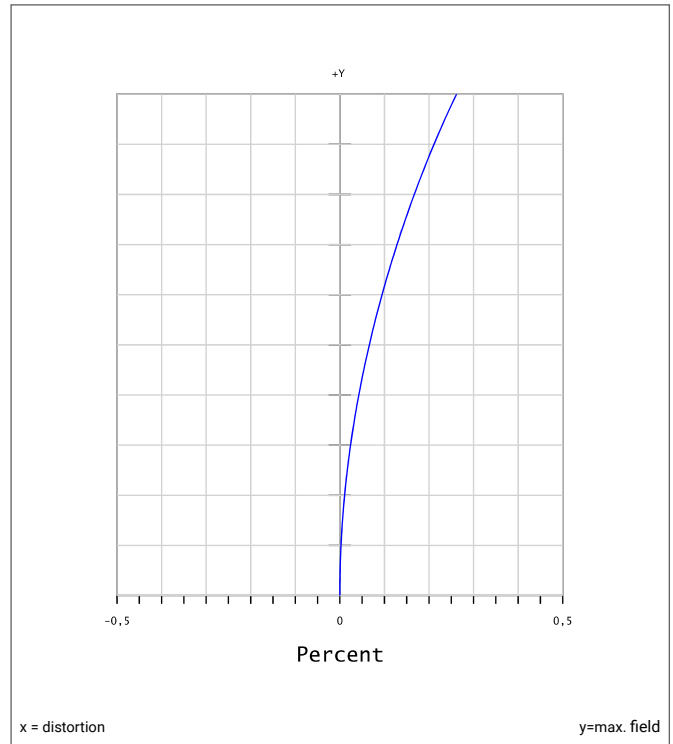
Sill Optics GmbH • Johann-Höllfritsch-Straße 13 • D-90530 Wendelstein • +49 9129 9023-0 • Published: 17.07.2024

DATA SHEET

SPECIFICATIONS

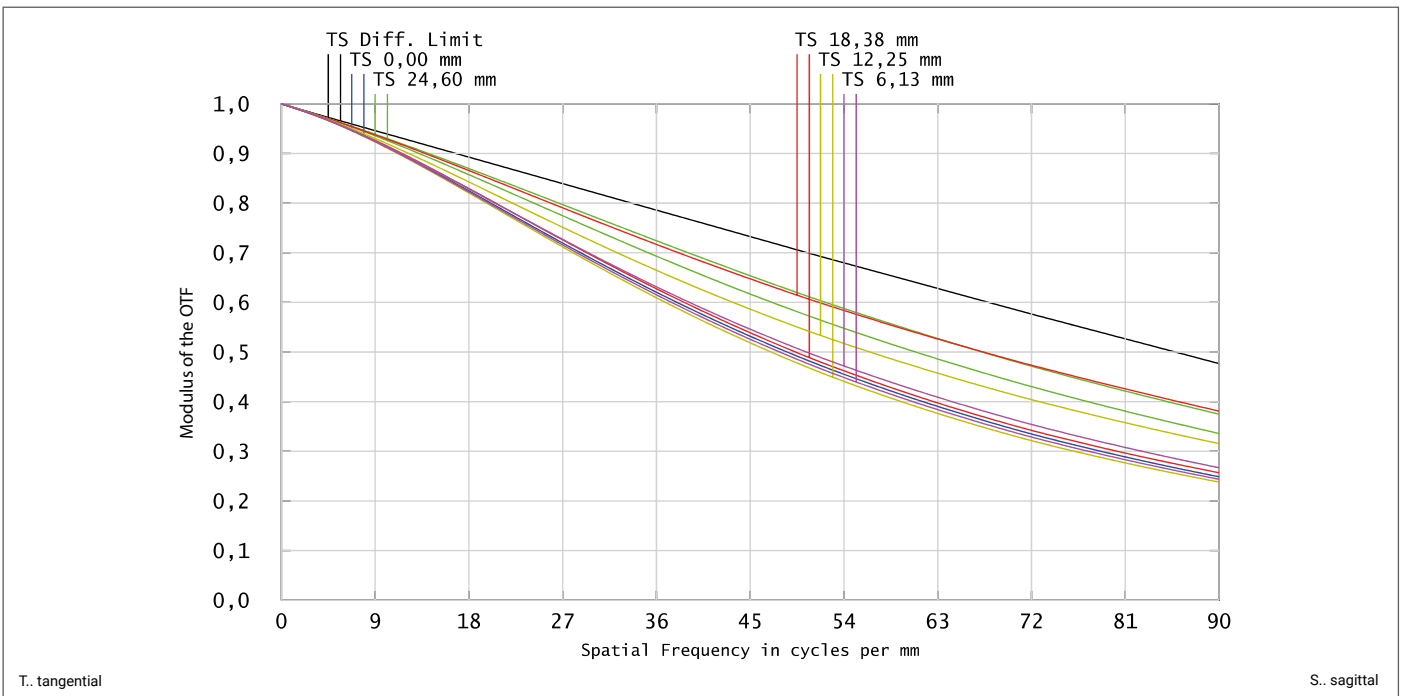
article number	S5LPJ2607-FMO
wavelength range [nm]	450 - 700
design wavelength [nm]	586
magnification (+/-5%)	0.71
working distance [mm] (+/-2%)	140.00
object size [mm] at a chip size of [mm]	28.0 x 28.0 19.9 x 19.9 (28.2)
object size [mm] at a chip size of [mm]	32.4 x 32.4 23.0 x 23.0 (32.6)
object size [mm] at a chip size of [mm]	34.8 x 34.8 24.7 x 24.7 (35.0)
max. telecentricity error [°]	0.092
recommended numerical aperture	0.450
max. distortion [%]	0.26
weight [kg]	not yet weighed
flange back distance [mm]	46.50
accessory	S5SET0022 (mount)

DISTORTION FOR 586 nm



REMARKS

MTF FOR VARIOUS OBJECT HEIGHTS AT 586 nm



GRAPHS AND DATA GIVEN BY DESIGN

All information contained in this data sheet is for information purposes only and is not binding. The content is subject to change at any time without notification, all information without guarantee. We reserve the right to make constructional changes in the course of product improvement. Copyright © Sill Optics GmbH • All rights reserved